

Q5 Chair  
Oliver Schick for  
Studio by Mobimex

Die Logik des Minimalen bestimmt Form und Materialien des Q5 Chair. Leder, Textil und Stahl bilden Haut und Gestell. Die ergonomisch geformte Sitzschale schmiegt sich dem Körper an. Durch die Kontrastierung der Bezugsmaterialien im Rücken und Sitz eröffnen sich ungeahnte Variationsmöglichkeiten.

The logic of the minimal determines the shape and materials of the Q5 chair. Leather, fabric and steel form the skin and frame. The ergonomically shaped seatshell nestles against the body. The contrasting cover materials of the back and seat create unimaginable possibilities for variation.





Q5 Chair  
Oliver Schick

## Untergestell Farben Base colours



Stahldraht schwarz  
Steel, Black

## Optionen Options

Soft Polsterung  
Soft upholstery

## Erweiterte Standard Stoffkollektionen „mixed“ Extended standard “mixed” fabric collections

„Mixed“ - Rücken Leder, Sitz Stoffbezug  
“Mixed” - leather back, fabric seat



Aristocrat, Carlucci, JAB



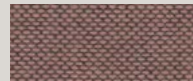
Pomise, JAB



Fox, JAB

Musteranfragen:  
Sample requests:  
info@studiobymobimex.com

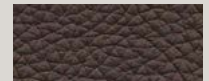
## Bezugsmaterial Cover material



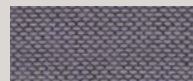
Kvadrat Re-wool  
648



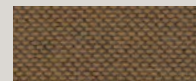
Kvadrat Re-wool  
128



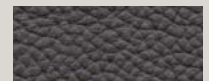
Leder Mokka  
Leather, Mocha



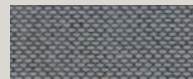
Kvadrat Re-wool  
658



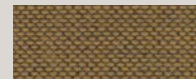
Kvadrat Re-wool  
358



Leder dunkelgrau  
Leather, Dark grey



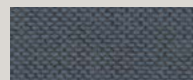
Kvadrat Re-wool  
718



Kvadrat Re-wool  
458



Leder schwarz  
Leather, Black



Kvadrat Re-wool  
768



Kvadrat Re-wool  
198



Leder Cognac  
Leather, Cognac



Leder Crema  
Leather, Creme

## Dimensionen Dimensions

| B (W)    | T (D)    | SH       | GH (TH)  |
|----------|----------|----------|----------|
| 44 cm *  | 54 cm *  | 46 cm *  | 80 cm *  |
| 57 cm ** | 54 cm ** | 46 cm ** | 80 cm ** |

SH = Sitzhöhe  
GH = Gesamthöhe

SH = seat height  
TH = total height

\* Stuhl ohne AL  
\*\* Stuhl mit AL

\* Chair without BR  
\*\* Chair with BR



Q5 Chair  
Oliver Schick