

NORA
Rob Easton for
Studio by Mobimex

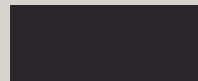
NORA ist eine zeitgenössische Kollektion, welche die Grenzen zwischen Objekt- und Wohndesign ideal verwischt. Diese Sofakollektion vereint den wichtigen Komfort für den Wohnbereich mit der für den Objektbereich geforderten kommerziellen Stabilität und Vielseitigkeit. Durch einfache Formen, klare Linien und die konsequente Beachtung subtiler Details, spricht die Kollektion NORA ein Gefühl von Zeitlosigkeit an und behält gleichzeitig ihren modernen Charakter.

Nora is a contemporary collection that blurs the lines between workplace and residential design. This sofa series blends the comforts of home with the commercial durability and versatility required in the workplace. Tied together by simple forms, clean lines, and consistent attention to subtle details, the Nora Collection appeals to a sense of timelessness while maintaining a modern edge.



NORA
Rob Easton

Untergestell Farben
Base colour



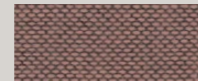
Schwarz
Black

Optionen
Options

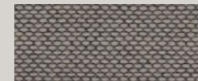
Andere Bezugsmaterialien auf Anfrage.
Other cover materials on request.



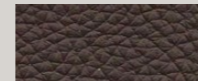
Bezugsmaterial
Cover material



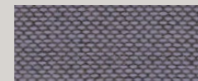
Re-Wool kvadrat
648



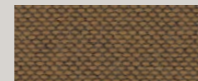
Re-Wool kvadrat
128



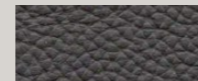
Leder, Mokka
Leather Mocha



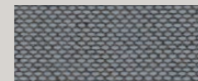
Re-Wool kvadrat
658



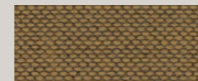
Re-Wool kvadrat
358



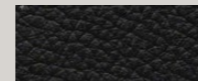
Leder dunkelgrau
Leather dark grey



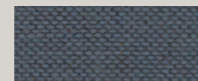
Re-Wool kvadrat
718



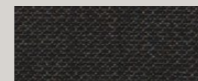
Re-Wool kvadrat
458



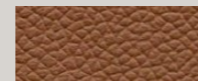
Leder schwarz
Leather Black



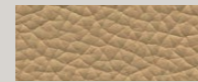
Re-Wool kvadrat
768



Re-Wool kvadrat
198



Leder Cognac
Leather Cognac



Leder Crema
Leather Creme

Dimensionen
Dimensions

L	T	H
95 cm	82 cm	62 cm
190 cm	82 cm	62 cm
240 cm	82 cm	62 cm

